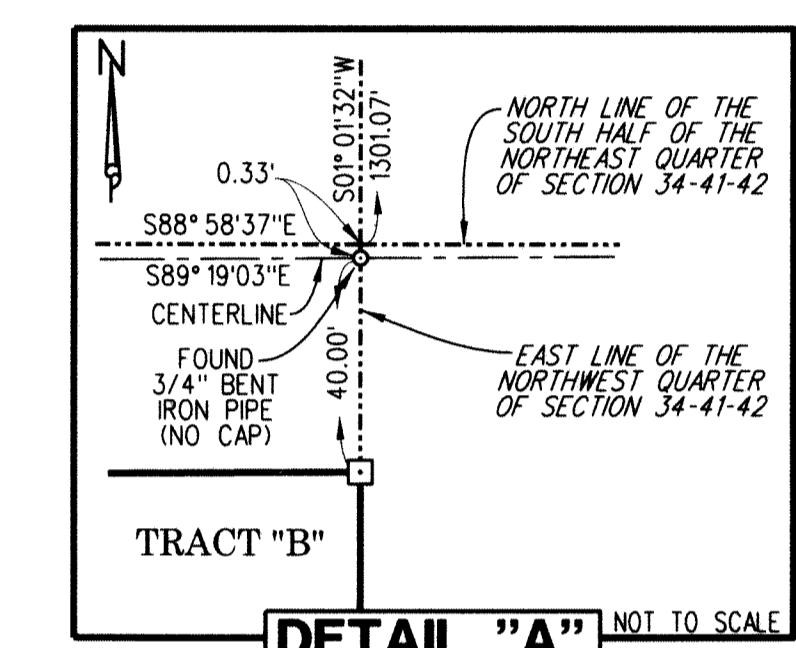
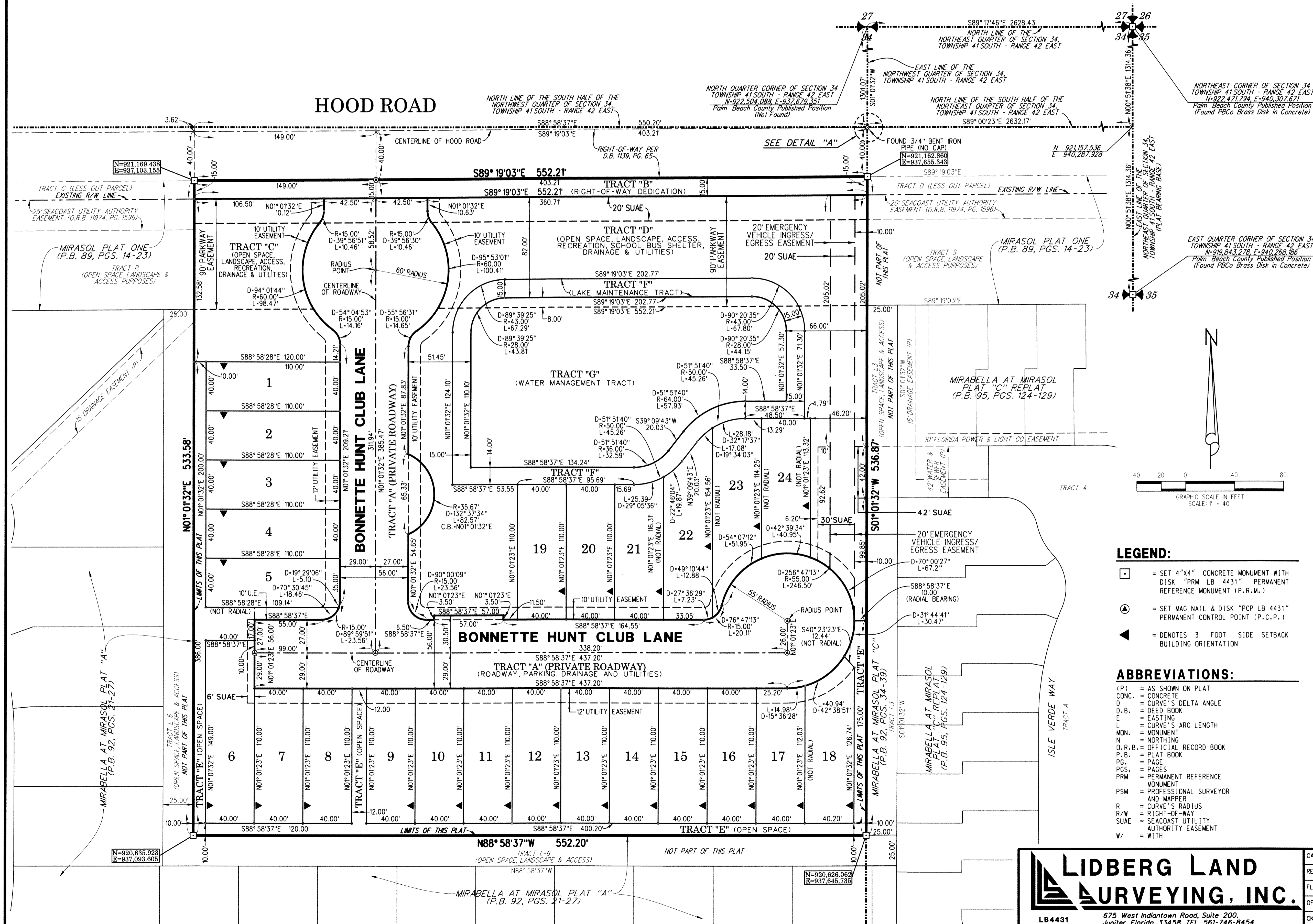


BONNETTE HUNT CLUB

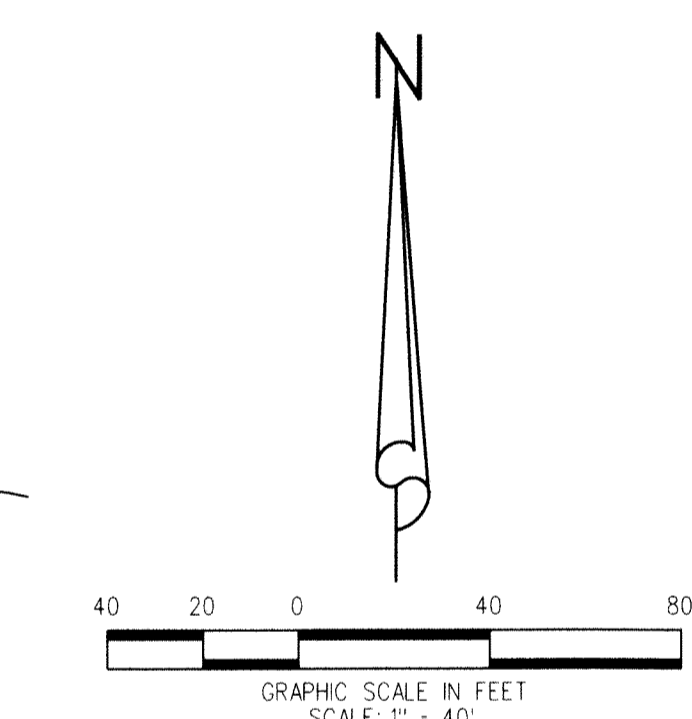
BEING A PARCEL OF LAND LYING IN SECTION 34,
TOWNSHIP 41 SOUTH, RANGE 42 EAST,
CITY OF PALM BEACH GARDENS, PALM BEACH COUNTY, FLORIDA

SEPTEMBER 2019 - SHEET 2 OF 2

120
SHEET 2 OF 2



AREA TABULATION		
DESCRIPTION	SQUARE FEET	ACREAGE
LOT 1	4,400	0.101
LOT 2	4,400	0.101
LOT 3	4,400	0.101
LOT 4	4,400	0.101
LOT 5	4,399	0.101
LOT 6	5,961	0.137
LOT 7	4,400	0.101
LOT 8	4,400	0.101
LOT 9	4,400	0.101
LOT 10	4,400	0.101
LOT 11	4,400	0.101
LOT 12	4,400	0.101
LOT 13	4,400	0.101
LOT 14	4,400	0.101
LOT 15	4,400	0.101
LOT 16	4,400	0.101
LOT 17	4,400	0.101
LOT 18	4,946	0.114
LOT 19	4,400	0.101
LOT 20	4,400	0.101
LOT 21	4,450	0.102
LOT 22	5,428	0.125
LOT 23	5,259	0.121
LOT 24	4,450	0.102
TRACT "A" (R/W FOR BONNETTE HUNT CLUB LANE)	57,291	1.315
TRACT "B" (R/W FOR HOOD ROAD)	8,283	0.190
TRACT "C" (OPEN SPACE)	13,486	0.310
TRACT "D" (OPEN SPACE)	50,140	1.150
TRACT "E" (OPEN SPACE)	14,102	0.324
TRACT "F" (LAKE MAINTENANCE)	11,541	0.265
TRACT "G" (WATER MANAGEMENT)	31,015	0.712
TOTAL	295,551	6.785



- LEGEND:**
- = SET 4"x4" CONCRETE MONUMENT WITH DISK (PRM LB 4431" PERMANENT REFERENCE MONUMENT (P.R.M.))
 - ⊙ = SET MAG NAIL & DISK "PCP LB 4431" PERMANENT CONTROL POINT (P.C.P.)
 - ◀ = DENOTES 3 FOOT SIDE SETBACK BUILDING ORIENTATION

- ABBREVIATIONS:**
- (P) = AS SHOWN ON PLAT
 - CONC. = CONCRETE
 - D = CURVE'S DELTA ANGLE
 - D.B. = DEED BOOK
 - E = EASTING
 - L = CURVE'S ARC LENGTH
 - MON. = MONUMENT
 - N = NORTHING
 - N.O.R.B. = OFFICIAL RECORD BOOK
 - P.B. = PLAT BOOK
 - PG. = PAGE
 - PGS. = PAGES
 - PRM = PERMANENT REFERENCE MONUMENT
 - PSM = PROFESSIONAL SURVEYOR AND MAPPER
 - R = CURVE'S RADIUS
 - R/W = RIGHT-OF-WAY
 - SUA = SEACAST UTILITY AUTHORITY EASEMENT
 - W/ = WITH

PLAT POSITION AND ORIENTATION:

- BEARINGS AND COORDINATES SHOWN HEREON ARE GRID
- LINEAR UNITS: US SURVEY FOOT
- DATUM: NORTH AMERICAN DATUM OF 1983/1990 ADJUSTMENT
- ZONE: FLORIDA EAST
- COORDINATE SYSTEM: 1983 STATE PLANE TRANSVERSE MERCATOR PROJECTION
- PROJECT SCALE FACTOR: 1.000032014
- DISTANCES SHOWN HEREON ARE GROUND DISTANCES, UNLESS OTHERWISE NOTED.
- GROUND DISTANCE X SCALE FACTOR = GRID DISTANCE

LIDBERG LAND SURVEYING, INC.
LB4431 675 West Indiantown Road, Suite 200, Jupiter, Florida 33458 TEL. 561-746-8454

CAD.	K:\UST \ 344142 \ 17-053-306 \ 17-053-306.DGN		
REF.			
FLD.	FB.	PG.	JOB 17-053-306
OFF.	CASASUS		DATE SEPTEMBER 2019
CKD.	D.C.L.	SHEET 2 OF 2	DWG. 017-053P